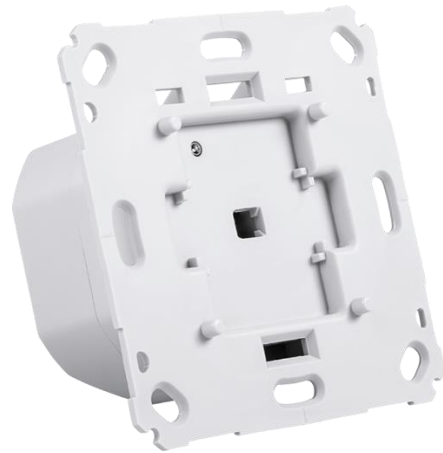


## Alpha IP: Switch Actuator and Meter - Brand Switches – BSM 24001-N0

The Alpha IP Switch Actuator and Meter for brand switches is suitable for installation in a flush-type box. Once installed, it switches connected consumers (e. g. lamps) and measures their energy consumption.

The switch actuator and meter for brand switches allows a comfortable control of connected consumers via the Alpha IP app. The energy consumption and the energy cost of connected consumers is displayed on the user interface.

The adaptors for different switch series allow a cost-saving exchange of switches made by popular manufacturers against an intelligent Alpha IP installation. Installation efforts are kept to a minimum because components of the already existing or scheduled switch series and cables can be used. The design resp. the colours and surfaces of already installed switch series remains unchanged, because existing frames and rockers can be continued to be used.



### 1.1 Product characteristics

- Flush-type actor for switching consumers
- The measuring function allows a reliable detection of activated consumers
- Application in existing disconnection, two-way and intermediate switch circuits
- Comfortable control via the Alpha IP app or via the Alpha IP remote control
- Compact design for installation in standard flush-type boxes
- Integration also into existing switch series by using existing frames and rockers
- If a suitable adapter is used, integration into the most popular designs of leading switch manufacturers is possible: Busch-Jaeger, Gira, Merten, Berker, Jung, düwi, Kopp
- A neutral conductor must be available for the installation

### 1.2 Scope of supply

- Alpha IP Switch Actuator and Meter for Brand Switches
- 2 x screws 3.2 x 15 mm
- 2 x screws 3.2 x 25 mm
- Operating Instructions

## 2 Technical data

Supply voltage	230 V/50 Hz
Switching current	max. 5 A
Standby power consumption	0.2 W
Max. switching power	1150 W
Load type	Ohmic load
Cable type and cross section	Rigid and flexible cable, 0,75 - 1,5 mm <sup>2</sup>
Relay	Changeover contact
Installation	Only in switchboxes according to DIN 49073-1
Protection type	IP20
Ambient temperature	5 - 35 °C
Dimensions (W x H x D)	71 x 71 x 37 mm
Weight	43 g
Radio frequency	868.3 MHz / 869.525 MHz
Typical radio free field range	240 m (in open air)
Packaging dimensions	122 x 112 x 48 mm
Packaging weight	120 g